




## TRIVIA CARD CHALLENGES :


**Game Tip :** Use the on-screen timer for trivia card questions.

 **BASIC BOND** — Select a scene it? card and answer the basic bond trivia question.

 **BEYOND BOND** — Select a scene it? card and answer the beyond bond question.

 **BRILLIANT BOND** — Select a scene it? card and answer the brilliant bond question.

## THE Q CARD :

 **Q CARDS** — Follow the instructions on the card and pass the dice to the next player/team in order.

## PLAYER'S CHOICE :

 **PLAYER'S CHOICE** — Choose any category.

## 007 :

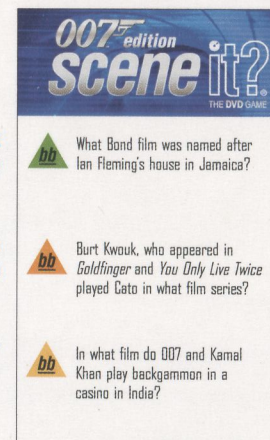
If you answer a question or solve a puzzle correctly while on **007**, move twice the number of spaces shown on the die on your **next** roll.

## WIN THE GAME :

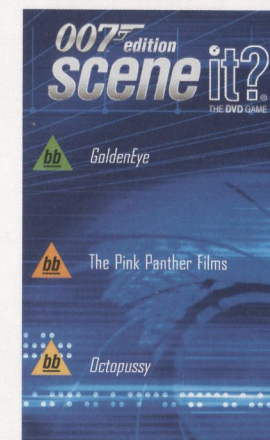
**1] all play to win** — When nearing the end of the game, you must stop [regardless of what shows on the numbered die] on the space labeled **stop : all play to win** and compete in an **all play** challenge prior to entering the **final cut** rings. If you win this special **all play to win**, you move directly to the **winner's circle** and **WIN THE GAME!** If you lose, you move to the outer **final cut** ring marked **3** and await your next turn for another chance to win. The dice pass to the next player/team in order and the winner of the challenge has the option to give another player/team a **Q** card or move their own game piece forward **three** spaces.

**2] final cut** — The idea of **final cut** is that you must correctly answer several questions in a row to win the game. Since it is difficult to get several questions in a row correct, other players will likely start catching up. The number of questions asked corresponds to the ring upon which your game piece stands. For example, if you are on circle **3**, you will get three questions. If you answer all three correctly, you move to the **winner's circle** and **WIN THE GAME!** If you get any of them wrong, you move in one ring and have to wait for your next turn for another chance to win. The on-screen instructions will walk you through **final cut**, so don't worry!

**Game Tip :** **1]** A player/team must successfully complete a challenge to win the game. If a player/team loses a challenge while on the **final cut** ring marked **1** they do not advance inward, they stay on **1** and wait for their next turn. **2]** A player/team may not receive **Q** cards from other players while in **final cut**.



**TRIVIA  
QUESTION CARD**



**TRIVIA  
ANSWER CARD**



**bb** **BRILLIANT BOND** — Select a scene it? card and answer the brilliant bond question.

### THE Q CARD :

**Q** **Q CARDS** — Follow the instructions on the card and pass the dice to the next player/team in order.

### PLAYER'S CHOICE :

**★** **PLAYER'S CHOICE** — Choose any category.

### 007 :

If you answer a question or solve a puzzle correctly while on **007**, move twice the number of spaces shown on the die on your **next** roll.

### WIN THE GAME :

**1] all play to win** — When nearing the end of the game, you must stop [regardless of what shows on the numbered die] on the space labeled **stop : all play to win** and compete in an **all play** challenge prior to entering the **final cut** rings. If you win this special **all play to win**, you move directly to the **winner's circle** and **WIN THE GAME!** If you lose, you move to the outer **final cut** ring marked **3** and await your next turn for another chance to win. The dice pass to the next player/team in order and the winner of the challenge has the option to give another player/team a **Q** card or move their own game piece forward **three** spaces.

**2] final cut** — The idea of **final cut** is that you must correctly answer several questions in a row to win the game. Since it is difficult to get several questions in a row correct, other players will likely start catching up. The number of questions asked corresponds to the ring upon which your game piece stands. For example, if you are on circle **3**, you will get three questions. If you answer all three correctly, you move to the **winner's circle** and **WIN THE GAME!** If you get any of them wrong, you move in one ring and have to wait for your next turn for another chance to win. The on-screen instructions will walk you through **final cut**, so don't worry!

**Game Tip : 1]** A player/team must successfully complete a challenge to win the game. If a player/team loses a challenge while on the **final cut** ring marked **1** they do not advance inward, they stay on **1** and wait for their next turn. **2]** A player/team may not receive **Q** cards from other players while in **final cut**.

### GAME PLAY OPTIONS :

**Numbered die [expert]** — To make the game more competitive [and longer], only roll the numbered die and advance after getting a question right [rather than automatically on each turn].

**Timer** — The trivia card timer is pre-set at 30 seconds. The competitive level of game play can be adjusted by choosing a **timer setting** ranging from 10 to 30 seconds. To adjust the timer, select **timer settings** from the **main menu** and then select the desired time length for card questions.

**Pre-set Gameplay** — Your DVD is automatically set-up to deliver questions at random; however, **because** it is random, you may get repeats. To maximize the number of games without repeated questions, choose **pre-set gameplay** on the **main menu** then select one of the pre-programmed sequences. **NOTE:** Some DVD players do not support the random shuffle feature provided by Optreve™ technology (a window will appear to warn you of this). In that situation, you should also choose **pre-set gameplay**.

**Party Play™ Scene It?** — Want to get your party going? Simply select **party play** from the **main menu** and get ready for some serious fun! No need to use the remote, just let Scene It? dial up one great puzzler or movie clip after another. Sit back, watch the action and see who can shout out the answer first! If you would like to go back to regular game play or stop the automatic dealing of questions, hit the **enter** button on your remote control when the game menu comes up.

**Solitaire Scene It?** — The Scene It? DVD is compact, easy to carry, and can be used without the game board. Use the Scene It? DVD on your laptop while you are traveling.

**BASIC  
BOND**

**bb** What Bond film was named after Ian Fleming's house in Jamaica?

**BEYOND  
BOND**

**bb** Burt Kwouk, who appeared in *Goldfinger* and *You Only Live Twice* played Gato in what film series?

**BRILLIANT  
BOND**

**bb** In what film do 007 and Kamal Khan play backgammon in a casino in India?

**TRIVIA  
QUESTION CARD**

**GoldenEye**

**bb** The Pink Panther Films

**bb** Octopussy

**TRIVIA  
ANSWER CARD**



## CONTENTS :

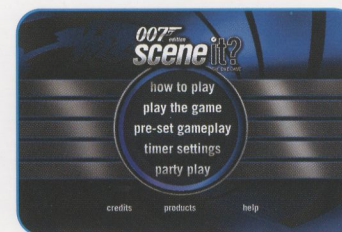
Flextime™ Game Board ▪ Four Collectible Game Pieces ▪ 200 Trivia Cards ▪ 30 Q Cards ▪ Numbered Die ▪ Category Die [8-sided] ▪ Category Reference Cards ▪ Game DVD

## SETTING UP THE GAME :

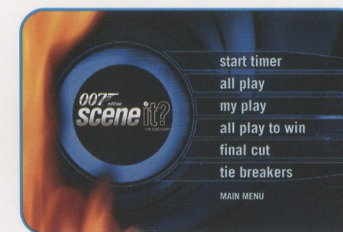
- 1] Place the Flextime game board where everyone can see the TV [or monitor] hooked up to your DVD player.  
Fully extend the board for long play [over an hour] or fold into a circle for short play [30-40 minutes].
- 2] Each player/team should choose a game piece.
- 3] Place the Q cards on the board, open the trivia cards and set up the DVD.

## SETTING UP THE DVD :

- 1] Select one person to operate the remote control, referred to as the **DVD master**.
- 2] Remote control functions :
  - Use the **arrows** on your remote control to navigate between menu items.
  - Use the **center, enter** or **play** button to activate a menu selection.
  - Use the **skip** or **fast forward** buttons to navigate through clips.
  - Use the **return** button [if available] to bypass repeats and automatically receive a new question.
- 3] Insert the DVD into your DVD player. There will be a quick introduction and then the main menu will appear.
- 4] Choose **play the game** from the **main menu** and the **game menu** will appear.



MAIN MENU




GAME MENU


## PLAY THE GAME :

- 1] Roll the **numbered die** to determine who goes first.
- 2] To take a turn :
  - Roll both dice and move the number of spaces shown [or if you want the game to be more challenging, only move after answering questions correctly].
  - The category die tells you what kind of questions you are going to get. If you answer correctly, you get to take another turn.Reference cards are provided for easy recognition of the categories.

## DVD CHALLENGES :

 **MY PLAY** — The **DVD master** selects **my play** from the **game menu** and the roller attempts to answer the challenge.

**Game Tip:** If you play Scene It? many times, you may eventually start seeing the same clips over again. Don't worry! Each clip has multiple questions associated with it, so you never know what you will be asked!

 **ALL PLAY** — The **DVD master** selects **all play** from the **game menu**. **ALL PLAYERS GET TO COMPETE**. The first player/team to clearly shout out the correct answer to the on-screen challenge wins. If the roller loses, the dice pass to the next player/team in order and the winner of the challenge has the option to either give another player/team a **Q** card or move their own game piece forward one space.

## DVD CHALLENGES

## TRIVIA CARD CHALLENGES

## Q CARDS AND PLAYER'S CHOICE

### Quick Category Reference



**MY PLAY** Select *my play* on the DVD and answer the question that follows.



**ALL PLAY** Select *all play* on the DVD and be the first to answer the question correctly.



**BASIC BOND** Select a *scene it?* card and answer the basic bond trivia question.



**BEYOND BOND** Select a *scene it?* card and answer the beyond bond question.



**BRILLIANT BOND** Select a *scene it?* card and answer the brilliant bond question.



**Q** Select a *Q* card and move the game piece as directed.



**PLAYER'S CHOICE** Choose a *scene it?* card (any category), a *Q* card, or a DVD *my play* question.



THE OBJECT OF THE GAME IS TO MOVE AROUND THE GAME BOARD AND BE THE FIRST TO ENTER THE WINNER'S CIRCLE.

## LEARNING TO PLAY :

There are two options for learning to play Scene It? :

- 1] Choose **how to play** on the DVD's **main menu** and watch the demonstration.
- 2] Read the instructions below.

## CONTENTS :

Flextime™ Game Board ▪ Four Collectible Game Pieces ▪ 200 Trivia Cards ▪ 30 Q Cards ▪ Numbered Die ▪ Category Die [8-sided] ▪ Category Reference Cards ▪ Game DVD

## SETTING UP THE GAME :

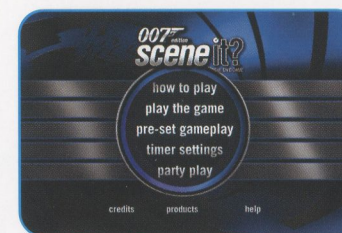
- 1] Place the Flextime game board where everyone can see the TV [or monitor] hooked up to your DVD player. Fully extend the board for long play [over an hour] or fold into a circle for short play [30-40 minutes].
- 2] Each player/team should choose a game piece.
- 3] Place the Q cards on the board, open the trivia cards and set up the DVD.

## SETTING UP THE DVD :

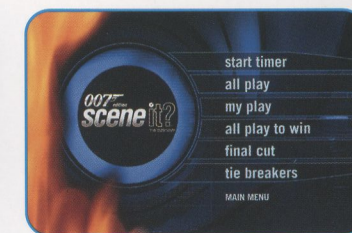
- 1] Select one person to operate the remote control, referred to as the **DVD master**.
- 2] Remote control functions :
  - Use the **arrows** on your remote control to navigate between menu items.
  - Use the **center, enter** or **play** button to activate a menu selection.
  - Use the **skip** or **fast forward** buttons to navigate through clips.
  - Use the **return** button [if available] to bypass repeats and automatically receive a new question.
- 3] Insert the DVD into your DVD player. There will be a quick introduction and then the main menu will appear.
- 4] Choose **play the game** from the **main menu** and the **game menu** will appear.

## PLAY THE GAME :

- 1] Roll the **numbered die** to determine who goes first.
- 2] To take a turn :
  - Roll both dice and move the number of spaces shown [or if you want the game to be more challenging, only move after answering questions correctly].
  - The category die tells you what kind of questions you are going to get. If you answer correctly, you get to take another turn. Reference cards are provided for easy recognition of the categories.



MAIN MENU



GAME MENU

### Quick Category Reference



**MY PLAY** Select my play on the DVD and answer the question that follows.